

MOUNTAIN HUTS

Ski Hut, also known as Lynd Lodge

Gibson's Hut, also known as Mount Pinnibar Hut

Whealers Creek Hut

This drive will take you to three Upper Murray huts, Ski Hut, Gibson's Hut and Wheelers Creek Hut. Each has a rich history, an account of which can be found in the logbook holder located at the huts.

To start your journey, travel south down the Benambra Corryong Road (Nariel Rd) and turn off at Crawford Crossing onto Dunstan's Road.

Note: parts of the track are steep in places, rocky and there are many ruts, so care is needed.



Geehi Hut

This loop is accessed from the Alpine Way and includes a series of huts, built for different purposes and all steeped in history unique to the Upper Murray.

The huts include Major Clews Hut, Old Geehi Hut, Doctor's Hut, Keebles Hut, Geehi Hut and Doctor Forbes Hut.

Major Clews Hut is accessible via Major Clews Trail, off the Alpine Way. Known as a great place to picnic, the mud brick hut is shaded by a large liquidambar tree. The hut was built in the late 1950s as a residence for Major Clews, a surveyor for the Snowy Mountains Hydro-electric Scheme, who mapped the area for the development.

From here, travel up the Geehi Walls Trail to Old Geehi Hut, also known as the Water Commission's Hut. It was built in 1945 by



Wheelers Creek Hut

Ski Hut (Lynd Lodge) was built in the 1950s by the local Upper Murray Ski Club to access the snow which fell in the area at the time. Reliable snow has not fallen in the area for many years.

At the intersection of Dunstan's Road and Six Mile Track, you can see a winch that was used in the 1950s to bring the logs up out of the valleys. The forest contributed to the timber industry of the era and still does today.

Turn onto the Shady Creek Lower Track to get to Gibson's Hut (Pinnibar Hut), located on the banks of Shady Creek. It offers a pleasant camping site.

Continue on to Cattlemans Creek Track to make your way home via Wheelers Creek Hut, where there are toilet facilities.

It is a long haul out on Wheelers Road and once you are back at the bitumen, stop at Stacey's Bridge, an idyllic camping spot on a peaceful creek-side location at the head of the Nariel Valley. You can swim and fish in the creek, and there are toilet and picnic facilities. Continue on this road back to Colac Colac and Corryong.

GEEHI HUTS LOOP

Major Clews Hut

Old Geehi Hut

Doctor's Hut

Keebles Hut

Geehi Hut

Doctor Forbes Hut



Murray River

D Benson for the NSW Water and Irrigation Commission and used by the Nankervis family for many years. Some also call it the Youth Hostels Hut. Built of river stones and mortar with a concrete floor, all materials were pack horsed in except for the rocks. It features a wooden boundary fence, and originally a two-seater drop toilet.

Doctor's Hut was built in the 1940s for fishing by the Khancoban Waterfall Farm Fly Fishing Club, and members used the building regularly.

Keebles Hut, complete with a painting of a trout on the front door, is a great place for camping. The hut was built in 1942 by Snowy Miller, Alex Milovitch, Arthur Keeble and Dr Hubert Smith for Arthur and Flo Nankervis as a fishing lodge. Over the

years, the hut has been renovated. It is a typical river stone hut built on a concrete slab and the roof and verandah are of corrugated iron.

Geehi Hut is also called Nankervis Hut after Ken Nankervis and his brother Jim. The brothers built the hut in 1952 as a stopover for when they were driving cattle between Tom Groggin and Corryong. There were several buildings including a shed, toilet, laundry and the main house. Unusual for the Australian Alpine region, the hut is constructed from river rocks. It's unique character makes it a popular destination for camping and walking groups.

Doctor Forbes Hut was built on the site of an earlier hut that burnt down in the 1939 bushfires. It is one of five river stone huts located within the Geehi area along the Swampy Plains



Mount Gibbo

River. The local environment heavily influenced the materials from which a hut was built, and river stone is in plentiful supply. It was built by Ned Nicholson and his son-in-law Dr John Forbes and includes a sleepout and verandah, covered by an iron roof.

To complete the Geehi Huts loop, you will need to negotiate two river crossings so take care in times of significant rainfall.

ACROSS THE SPINE OF THE ALPS – MOUNT PINNIBAR, MOUNT ANDERSON, MOUNT GIBBO, & WILD BOAR RANGE

To drive to Mount Pinnibar (1772m) from Corryong we recommend travelling out through Thowgla and along Walker's Road, past Gentle Annie and Mount Boebuck, following Mount Pinnibar Jeep track to the summit. Continuing south along the Mount Gibbo track will take you to Mount Anderson (1666m) and Mount Gibbo (1757m) and some amazing views of Victoria's High Country.

Finish the loop by travelling along the Wild Boar Track back to to the Benambra-Corryong Road (the loop can be driven in the reverse direction). This drive takes you over the highest mountains in the area, giving access to some special views of the Snowy Mountain's Main Range.

The track to Mount Pinnibar is extremely steep in places and should not be attempted after rain. The Mount Anderson Track from Mount Pinnibar to the junction of Mount Gibbo Track is particularly rough and shaly.



Mount Pinnibar

SURVEYOR'S CREEK, WHERE THE MAN FROM SNOWY RIVER DIED

A trip into this area should not be taken after rain.

Surveyor's Creek can be accessed from Thowgla by following Hall Track and continuing south along the Mount Elliot Ridge Track to Cherry Tree Avenue and past Bunroy Hut.

Bunroy Hut is a private hut on freehold land. If you travel through this property, make sure you leave the gates as you find them. Alternatively follow Walkers Road south to the Mount Baldy Track, which connects the Surveyor's Creek Track near Mount Barlow.



Tin Creek Creek campsite

When you get to the end of Surveyor's Creek Track at the Murray River, you will see a bridle trail – Harrington's Bridle Track. In 1884 Jack Riley was employed as the manager of Tom Groggin Station and had worked there for 30 years. He was a highly skilled horseman and stockman and is said to be the inspiration behind Banjo Paterson's poem *The Man from Snowy River*.

During the winter of 1914 Riley became gravely ill and a team of cattlemen carried him from his hut at Tom Groggin to Corryong in search of medical attention.

Through freezing temperatures and snow, they carried the semi-conscious Riley along Harrington's Bridle Track, at

first on a makeshift stretcher and then assisted on horseback for the climb over Hermit Mountain.

At Surveyor's Creek the party set up camp in an abandoned miner's hut and it was here that Riley passed away.

A memorial to Riley has been established near the remains of the hut which reads: *'Jack Riley, the Man from Snowy River, 14th July 1914'*. Riley is buried at the Corryong Cemetery.



Jack Riley Memorial

Seeing the Upper Murray by four-wheel drive is a unique experience and will take you to some of the most scenic sites in the region. As with all 4WD adventures, there are important precautions that should be taken. Conditions in the Upper Murray can change quickly, making tracks difficult to negotiate. Always understand the risks involved and ensure you have appropriate recovery gear and communications. Mobile phone coverage in the Upper Murray parklands is very limited and should not be relied upon. It is preferable to travel in groups for safety reasons. Drivers should also be aware that in some areas, logging trucks will be operating – be courteous to these trucks and mindful that they cannot stop easily.

Throughout the Upper Murray, most forested land is managed by either Parks Victoria or the Department of Environment, Land, Water and Planning (DELWP). Prior to departing, always check mapshare.vic.gov.au/mapsharevic and go to the More To Explore tab to find out about any restrictions or road closures which may apply. Additionally, the most up-to-date advice can always be obtained from the DELWP/Parks Victoria Office on 136 186 (DELWP) or 131 963 (Parks Victoria).

The Corryong Visitor Information Centre has an excellent 4WD map, *The Beautiful Upper Murray*, and other maps available for sale. It is strongly suggested that you always carry a paper map with you when exploring remote regions.



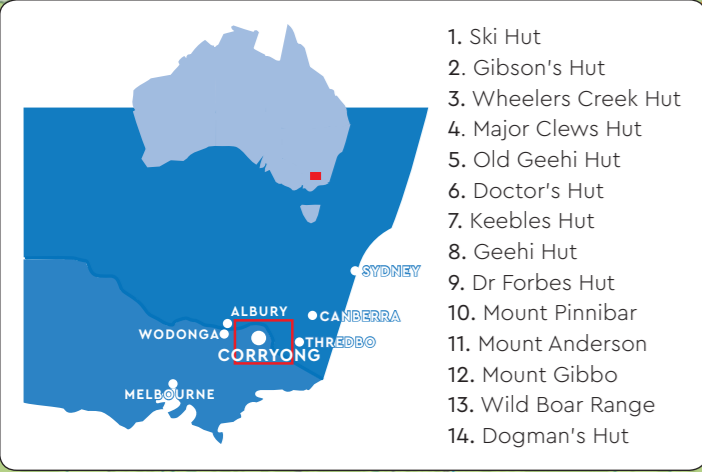
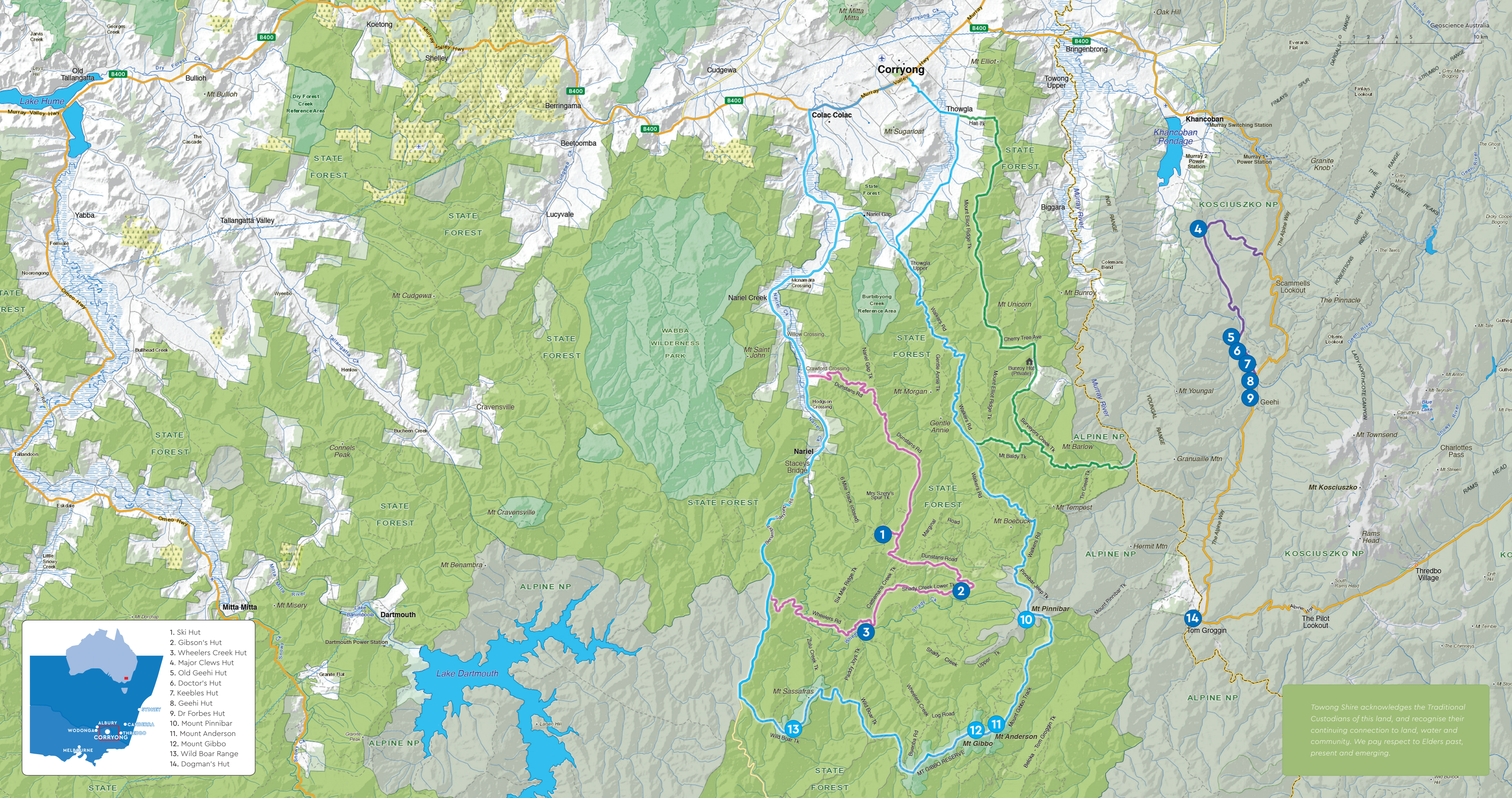
Upper Murray
FOUR WHEEL
DRIVE TRACKS

This brochure highlights the huts of the Upper Murray, of which there are about 15 in total. Many of these were built from the mid-1800s by cattle musterers, fishermen, miners, loggers, forest rangers and more recently, skiing enthusiasts. The huts are maintained and rebuilt by Parks Victoria, the Department of Environment, Land, Water and Planning, dedicated volunteer groups, and the Victorian High Country Huts Association (VHCHA). The VHCHA was founded after the major bushfires of February 2003 to try and preserve the remaining huts. The Black Summer fires of 2019–2020 extensively damaged Gibson's, Wheelers Creek and Ski Huts. DELWP, assisted by volunteers, plan to rebuild these as soon as possible. You should not rely on these huts for shelter.

For more information:
Corryong Visitor Information Centre
50 Hanson St, Corryong
02 6076 2277
visituppermurray.com.au



Photos: Glenn Marshall,
travel writer
4wdadventureoz.com



1. Ski Hut
2. Gibson's Hut
3. Wheelers Creek Hut
4. Major Clews Hut
5. Old Geehi Hut
6. Doctor's Hut
7. Keebles Hut
8. Geehi Hut
9. Dr Forbes Hut
10. Mount Pinnibar
11. Mount Anderson
12. Mount Gibbo
13. Wild Boar Range
14. Dogman's Hut

Towong Shire acknowledges the Traditional Custodians of this land, and recognise their continuing connection to land, water and community. We pay respect to Elders past, present and emerging.